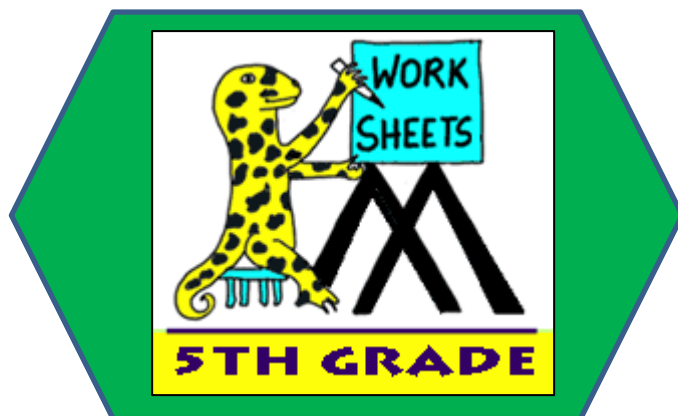


MATH SALAMANDERS 5TH GRADE GRAB PACK 1

This pack is a selection of 10 Math sheets designed especially for fifth graders. We have taken all the sheets from our 5th grade area on our site.



In the pack is a range of number sheets, coloring pages, and puzzles.

There is also an answer pack which you can download separately.

CONTENTS			
1	Column Addition Decimals	6	Order of Operations 5:1
2	Equivalent Fractions 2	7	Easter Codebreaker 2B
3	Easter Color by Number Subtraction to 20	8	Number Fill In Puzzle 2
4	Reading Scales Standard 5A	9	1..2..3..4 Challenge
5	Make 10	10	Mental Math Quiz 5:1

Please give us feedback on our pack – both what you liked and what sheets you would like to see more of by leaving a comment on the link below.

<https://www.math-salamanders.com/math-grab-packs.html>



Free Math Sheets, Math Games and Math Help

MATH-SALAMANDERS.COM



COLUMN ADDITION DECIMALS SHEET 1

$$\begin{array}{r} 1) \quad 1928.27 \\ + \quad 4293.55 \\ \hline \end{array}$$

$$\begin{array}{r} 2) \quad 2094.06 \\ + \quad 1837.75 \\ \hline \end{array}$$

$$\begin{array}{r} 3) \quad 7382.59 \\ + \quad 823.68 \\ \hline \end{array}$$

$$\begin{array}{r} 4) \quad 6308.72 \\ + \quad 1839.8 \\ \hline \end{array}$$

$$\begin{array}{r} 5) \quad 8250.95 \\ + \quad 2839.47 \\ \hline \end{array}$$

$$\begin{array}{r} 6) \quad 8372.8 \\ + \quad 497.49 \\ \hline \end{array}$$

$$\begin{array}{r} 7) \quad 9382.63 \\ + \quad 6308.85 \\ \hline \end{array}$$

$$\begin{array}{r} 8) \quad 3028.29 \\ + \quad 8240.75 \\ \hline \end{array}$$

$$\begin{array}{r} 9) \quad 7385.68 \\ + \quad 8297.9 \\ \hline \end{array}$$

$$\begin{array}{r} 10) \quad 670.138 \\ + \quad 185.372 \\ \hline \end{array}$$

$$\begin{array}{r} 11) \quad 139.743 \\ + \quad 382.108 \\ \hline \end{array}$$

$$\begin{array}{r} 12) \quad 738.138 \\ + \quad 82.527 \\ \hline \end{array}$$

$$\begin{array}{r} 13) \quad 7362.84 \\ + \quad 2831.27 \\ + \quad 1093.35 \\ \hline \end{array}$$

$$\begin{array}{r} 14) \quad 6038.08 \\ + \quad 3942.75 \\ + \quad 1903.24 \\ \hline \end{array}$$

$$\begin{array}{r} 15) \quad 7263.80 \\ + \quad 1980.25 \\ + \quad 328.75 \\ \hline \end{array}$$

$$\begin{array}{r} 16) \quad 368.473 \\ + \quad 129.806 \\ + \quad 255.324 \\ \hline \end{array}$$

$$\begin{array}{r} 17) \quad 7380.26 \\ + \quad 582.85 \\ + \quad 1632.09 \\ \hline \end{array}$$

$$\begin{array}{r} 18) \quad 8925.37 \\ + \quad 5248.81 \\ + \quad 794.36 \\ \hline \end{array}$$



EQUIVALENT FRACTIONS SHEET 2

FRACTION STRIPS

Use these fractions strips to help you find the equivalent fractions.

Put the correct fraction into the box and fill in the answers below.



1)

$\frac{1}{2}$	$\frac{1}{2}$

$$\frac{1}{2} = \frac{\quad}{4}$$

2)

$\frac{1}{2}$	$\frac{1}{2}$

$$\frac{1}{2} = \frac{\quad}{6}$$

3)

$\frac{1}{3}$	$\frac{1}{3}$	$\frac{1}{3}$

$$\frac{1}{3} = \frac{\quad}{6}$$

4)

$\frac{1}{4}$	$\frac{1}{4}$	$\frac{1}{4}$	$\frac{1}{4}$

$$\frac{1}{4} = \frac{\quad}{8}$$

5)

$\frac{1}{5}$	$\frac{1}{5}$	$\frac{1}{5}$	$\frac{1}{5}$	$\frac{1}{5}$

$$\frac{1}{5} = \frac{\quad}{10}$$

6)

$\frac{1}{6}$	$\frac{1}{6}$	$\frac{1}{6}$	$\frac{1}{6}$	$\frac{1}{6}$	$\frac{1}{6}$

$$\frac{1}{6} = \frac{\quad}{12}$$

Now use the fraction strips to answer these questions.

7) $\frac{2}{2} = \frac{\quad}{4}$

8) $\frac{3}{4} = \frac{\quad}{8}$

9) $\frac{2}{3} = \frac{\quad}{6}$

10) $\frac{2}{5} = \frac{\quad}{10}$

11) $\frac{3}{3} = \frac{\quad}{6}$

12) $\frac{4}{6} = \frac{\quad}{12}$

13) $\frac{4}{5} = \frac{\quad}{10}$

14) $\frac{5}{6} = \frac{\quad}{12}$



EASTER COLOR BY NUMBER: CHICK SUBTRACTION TO 20

13-10	12-10	6-6	15-14	6-5	12-4	20-10	16-12	15-7	13-4	5-4	10-9	11-11	12-9	16-13	8-6
14-11	6-4	7-5	8-8	20-3	16-6	10-3	15-8	13-6	10-6	13-5	18-8	16-15	11-9	17-16	12-10
8-8	13-11	5-3	14-5	13-4	11-5	19-13	13-7	10-6	14-8	13-9	4-3	7-4	10-8	15-15	2-0
16-14	7-6	9-7	11-10	10-3	18-11	16-9	13-8	14-9	19-15	13-6	12-6	18-17	14-12	17-14	8-8
3-0	11-8	16-15	10-8	10-5	20-15	14-8	11-4	17-10	12-5	9-3	7-3	4-1	6-6	10-9	16-13
14-11	8-7	3-2	5-5	18-12	14-12	13-8	20-13	15-9	8-3	13-10	12-6	8-6	14-12	20-19	13-13
16-15	15-12	20-11	14-14	16-9	10-5	6-2	20-9	14-3	16-12	18-11	20-14	11-8	16-8	19-2	2-2
13-10	15-6	20-0	16-10	11-4	20-16	17-5	13-2	18-5	20-7	8-3	12-6	10-3	15-11	15-13	12-11
9-6	13-8	8-4	7-1	15-11	18-13	16-10	11-0	13-1	12-5	20-15	5-0	6-2	18-0	13-8	15-7
16-9	14-9	20-14	12-3	20-3	12-5	18-12	19-14	10-3	6-1	13-6	19-2	18-8	11-2	14-7	10-4
4-1	19-12	20-6	17-1	16-8	18-1	13-8	12-6	11-3	17-11	20-12	15-6	18-3	19-5	16-2	18-17
20-17	13-5	17-7	13-5	20-5	19-4	16-7	20-13	14-6	16-6	16-2	17-3	14-5	20-10	20-3	13-12
4-4	14-2	19-6	17-5	14-4	18-9	20-6	17-3	19-3	13-5	12-4	16-7	13-1	18-6	20-9	11-9
12-12	18-0	19-9	14-2	17-5	11-0	17-9	14-5	20-10	18-7	17-4	20-7	10-1	15-3	11-3	18-15
20-18	19-1	17-7	15-7	12-1	19-11	18-5	16-4	20-7	15-5	16-4	13-5	20-11	19-9	20-2	16-13
10-10	8-7	14-0	18-4	16-1	12-4	10-0	19-6	9-1	15-7	16-8	20-4	17-3	19-5	5-4	13-12
16-15	14-11	19-10	15-6	17-3	20-4	18-3	14-6	17-7	18-2	20-6	17-2	20-12	16-14	3-0	8-5
16-6	7-6	11-10	19-1	13-5	10-2	17-9	19-3	20-5	16-7	13-3	10-2	20-0	9-9	12-11	18-1
19-9	20-2	18-16	14-11	18-1	19-0	18-9	20-11	16-8	17-0	20-3	19-1	16-13	11-9	12-4	13-5
20-10	14-6	15-6	10-9	11-8	17-7	17-0	20-3	19-1	18-0	13-4	16-13	20-18	17-9	20-2	19-11

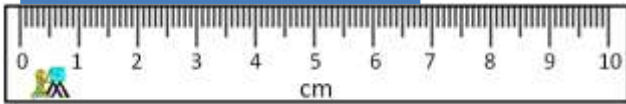
KEY		
0 to 3 black	4 to 7 yellow	8 to 10 blue
11 to 13 red	14 to 16 green	17 to 20 white



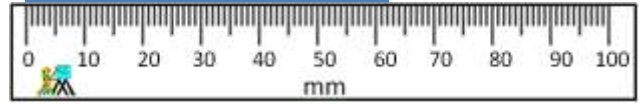
READING SCALES METRIC 5A

Use your knowledge of fraction and the number system to work out these measurements. Remember to write down the units of measurement.

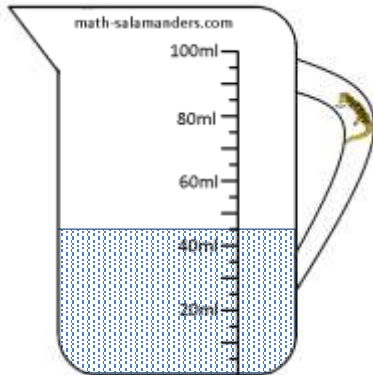
1) How long? _____



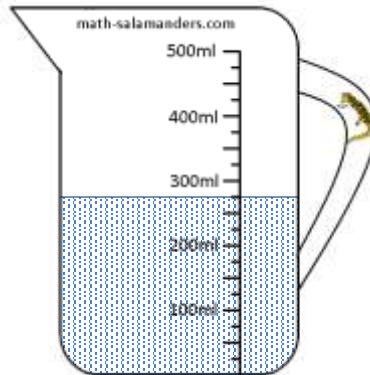
2) How long? _____



3) How much? _____



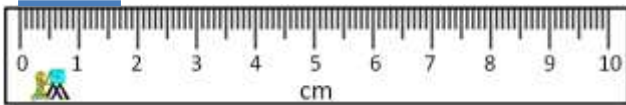
4) How much? _____



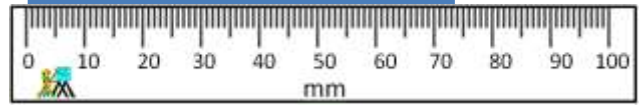
5) How much? _____



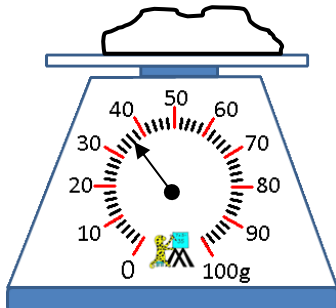
6) How long? _____



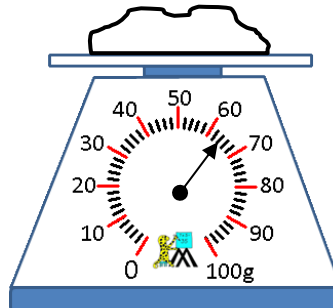
7) How long? _____



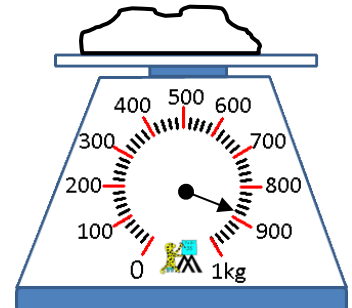
8) How heavy? _____



9) How heavy? _____



10) How heavy? _____



MAKE 10

Use the numbers in the grid each time.

3.2	1.9	5.4	0.7	2.6
9.3	4.2	6.8	1.4	8.1
4.6	7.4	2.9	3.5	5.8

Challenge 1

Find pairs of numbers that add up to 10.

Try to find 6 different pairs.

Challenge 2

Try to find sets of 3 numbers that add up to make 10.

Try to find 3 different answers.

ORDER OF OPERATIONS SHEET 5:1

Remember the correct order:

Parentheses	Exponents	Multiplication & Division	Addition & Subtraction
-------------	-----------	---------------------------	------------------------

$$1) (4 + 3) \times 2 = 14$$

$$7 \times 2$$

$$9) 5 \times 3 + 4 =$$

$$17) 5 + 2 \times 4 =$$

$$2) 4 + (3 \times 2) =$$

$$10) 5 + 3 \times 4 =$$

$$18) 7 \times 2 - 5 =$$

$$3) (2 + 3) \times 5 =$$

$$11) 10 \div 2 + 3 =$$

$$19) 14 - 3 \times 3 =$$

$$4) 2 + (3 \times 5) =$$

$$12) 10 - 6 \div 2 =$$

$$20) 8 + (3 \times 5) =$$

$$5) (8 - 3) \times 2 =$$

$$13) (4 + 7) \times 3 =$$

$$21) 6 \times 3 - 7 =$$

$$6) 8 - (3 \times 2) =$$

$$14) 4 + 7 \times 3 =$$

$$22) 12 \div 2 + 4 =$$

$$7) (4 + 2) \times 3 =$$

$$15) 10 - 3 \times 2 =$$

$$23) 9 - 7 + 6 =$$

$$8) 4 + (2 \times 3) =$$

$$16) (10 - 3) \times 2 =$$

$$24) 9 - (7 + 6) =$$

EASTER CODEBREAKER 2B

MULTIPLICATION FACTS TO 10X10

Use the clues to work out the answer to the Easter joke.

A	B	C	D	E	F	H	I	L	M	N	O	R	S	T	U	Y	!
12	30	49	42	24	48	56	20	40	64	36	64	81	18	28	8	32	14

Did you hear what happened to the rabbits
who went too near the bath?

Letter	T																
Number	28																
Fact	4x7	7x8	6x4	8x4			6x8	4x6	10x4	8x5							

Letter																	
Number																	
Fact	5x4	4x9		4x3	9x4	6x7			5x6	3x8	7x7	6x2					

Letter																	
Number																	
Fact	8x8	4x6		8x7	8x8	7x4			7x7	9x9	8x8	3x6					

Letter																	
Number																	
Fact	9x2		10x3	2x4	4x9	6x6	4x5	8x3	2x9	7x2							



1.. 2.. 3.. 4.. CHALLENGE

Use each of the digits 1, 2, 3 and 4 **once** in each calculation to make numbers from 1 to 20. Remember to use brackets!

You can use the digits in any order.

Example: $(4 + 3 - 1) \times 2 = 12$

$= 1$	$= 11$
$= 2$	$(4 + 3 - 1) \times 2 = 12$
$= 3$	$= 13$
$= 4$	$= 14$
$= 5$	$= 15$
$= 6$	$= 16$
$= 7$	$= 17$
$= 8$	$= 18$
$= 9$	$= 19$
$= 10$	$= 20$


Extension:

Can you also use the digits to make the numbers from 21 to 30?

One of these numbers is impossible to make without combining digits!



MENTAL MATH QUIZ 5:1

1)	$27 + 0.6 + 0.02$	
2)	$360 \div 4$	
3)	How many edges? 	
4)	I have a litre bottle of cola. I drink 650ml. How much is left?	ml
5)	Which two numbers have a sum of 15 and a product of 36?	
6)	How many quarts make 5 gallons?	
7)	$4 \frac{1}{3} - \frac{2}{3}$	
8)	Write down all the factors of 33. _____	
9)	Which of these numbers is not a multiple of 3? 81 111 73 27 105	
10)	Flight time from Houston to Orlando is 2 hours to 20 minutes. I arrive at Orlando at 4:15pm. What time did I set off?	
11)	What is $\frac{3}{4}$ of 20m?	m
12)	What is the value of $3(x - 6)$ when $x = 11$?	
13)	At a wildlife center, adult entry is \$12 and child entry is \$8. I pay for 2 adults and 3 children with a \$50 bill. How much change?	
14)	The time is a quarter to 7 in the evening. Write this in 24 clock time.	
15)	A kid's skipping rope is 7ft long. How many ropes could I cut from a 10-yard-long piece of rope?	
16)	Number cards from 1 to 10 are placed in a bag. Flame chooses a card at random. What is the chance that it is a multiple of 4?	
17)	Write down all the prime numbers between 10 and 20.	
18)	How many thirds make 5?	

